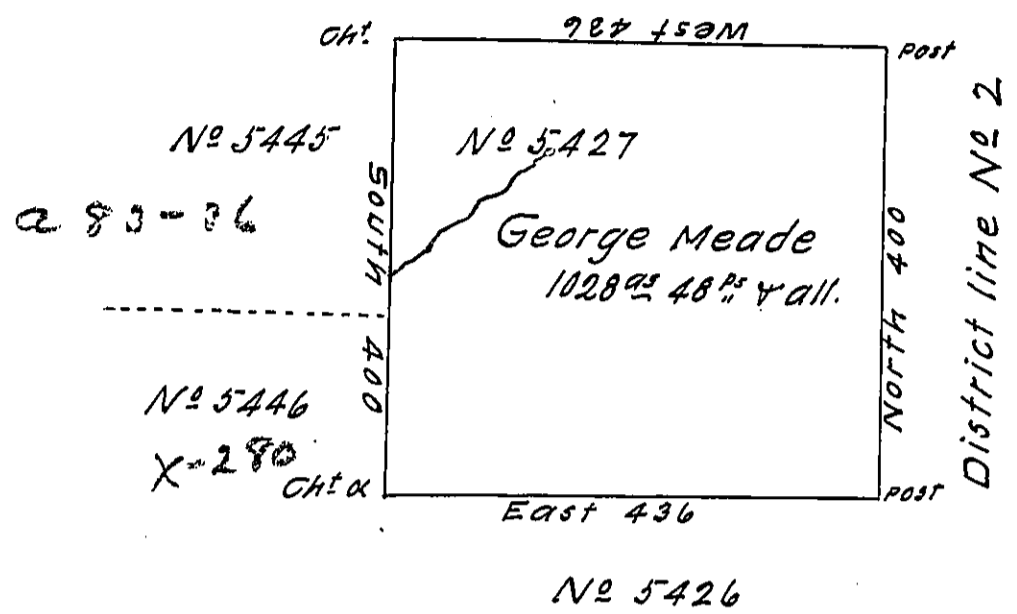


a 46-35

N^o 5428



a 46-39

Situate on the waters of Sinnemahoning Creek in North^d County containing 1028 acres 48 perches and usual allowance for roads. Surveyed May 13th 1794 for George Meade in pursuance of a warrant N^o 5427 dated 3^d March 1794

John Canan D.5.

Daniel Brodhead Esq^t S.G.

IN TESTIMONY that the above is a copy of the original remaining on file in the Department of Internal Affairs of Pennsylvania, made conformably to an Act of Assembly approved the 16th day of February, 1833, I have hereunto set my Hand and caused the Seal of said Department to be affixed at Harrisburg, this twenty sixth day of JANUARY 1912

Henry Horick
Secretary of Internal Affairs.